



MONTHLY MEMBERSHIP PROGRESS REPORT

District 2 T3

Results as of: 5/31/2015

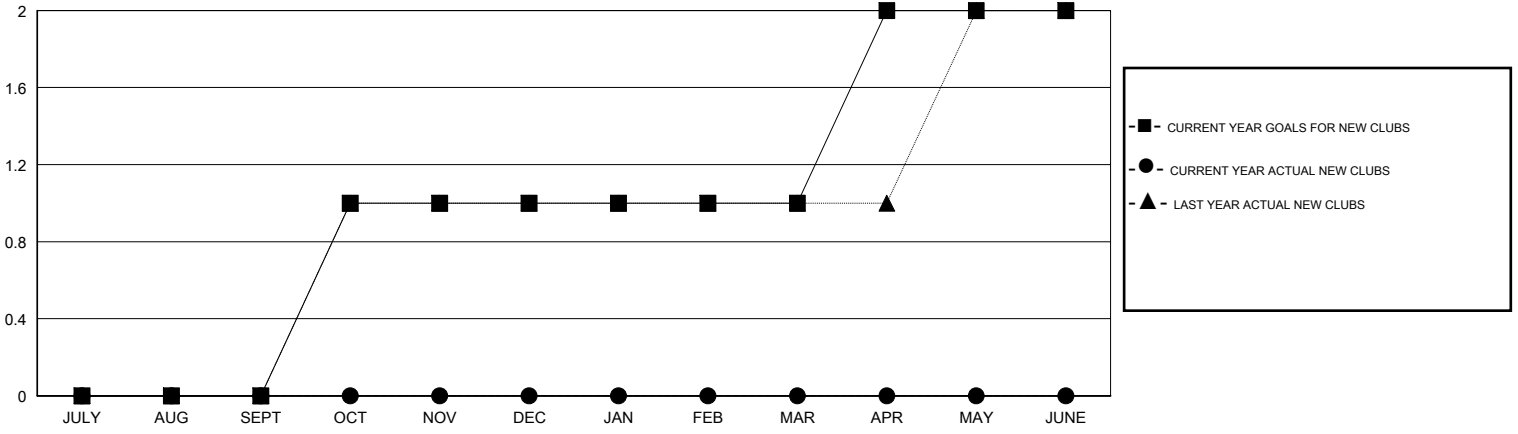
GMT: HAL GRIFFIN

LOCATION TEXAS

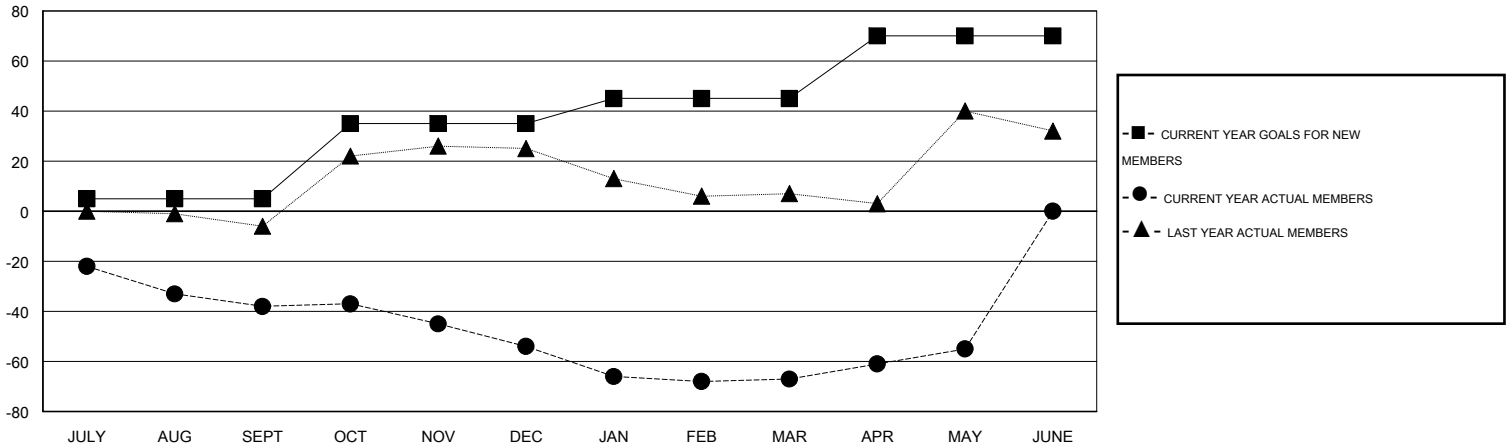
GMT CA 1

Clubs					Members				
RESULTS FOR 2014-2015					RESULTS FOR 2014-2015				
QUARTER	NEW CLUB GOAL	NEW CLUBS	DROPPED CLUBS	NET GAIN/LOSS	QUARTER	NEW MEMBER GOAL	CHARTER AND NEW MEMBERS ADDED	DROPPED MEMBERS	NET GAIN/LOSS
JULY/AUG/SEPT	0	0	2	-2	JULY/AUG/SEPT	5	31	69	-38
OCT/NOV/DEC	1	0	1	-1	OCT/NOV/DEC	30	35	51	-16
JAN/FEB/MAR	0	0	0	0	JAN/FEB/MAR	10	24	37	-13
APR/MAY/JUNE	1	0	0	0	APR/MAY/JUNE	25	20	8	12

GOALS AND ACTUAL NEW CLUBS CUMULATIVE



GOALS AND ACTUAL MEMBERS CUMULATIVE



DROPPED CLUBS: 3	23 CLUBS OF 37 ADDED 1 OR MORE NEW MEMBERS	<u>GENDER DISTRIBUTION</u>	
<u>DROPPED MEMBERS</u>		MALE	513 (63.57%)
DECEASED	CLICK HERE FOR HEALTH ASSESSMENT DATA	FEMALE	294 (36.43%)
CLUB CANCELLED		FAMILY UNIT MEMBERS	130
OTHER		HEAD OF HOUSEHOLD	60
TOTAL		NON-HEAD OF HOUSEHOLD	70